

CALCTRA

Career Training | Quality Products | Changed Lives

CONCRETE COMMUNICATION BUILDING

COMMUNICATION SHELTERS





STANDARD FEATURES

- 4" x 4" steel reinforced concrete walls and roof panel
- 4" steel reinforced concrete floor
- 4" x 8" steel frame with forklift pockets
- Shotcrete exterior walls with elastomeric coating
- Internal structural seals to conceal structural seals from UV light
- Elastomeric roof coating with drip edge
- One 18 gauge 3' x 7' commercial steel door with 16 gauge frames, with mortise lockset, security outer door with secure pad lock
- Two 26,500lb rated D rings and rear tow connection
 - 8' x 11' exterior dimensions
 - Louvered intake and electrical penetration
- 3/4" fire rated plywood paneling walls
- 60psf distributed roof load rating
- 150mph wind rating
- 200psf distributed floor load rating

EXTERIOR DIMENSIONS

8'W x 11'L x 9'H

INTERIOR DIMENSIONS

7'2"W x 9'2"L x 7'9"H

60PSF DISTRIBUTED ROOF LOAD RATING

150MPH WIND RATING

200PSF DISTRIBUTED FLOOR LOAD RATING



4" x 8" STEEL FRAME WITH FORKLIFT POCKETS



PADLOCK FOR SECURITY DOOR



LOUVERED INTAKE AND ELECTRICAL PENETRATION



TWO 26,500lb RATED D RINGS AND REAR TOW CONNECTION

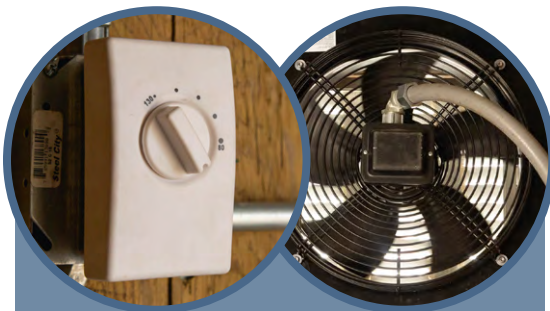


CUSTOM INTEGRATION

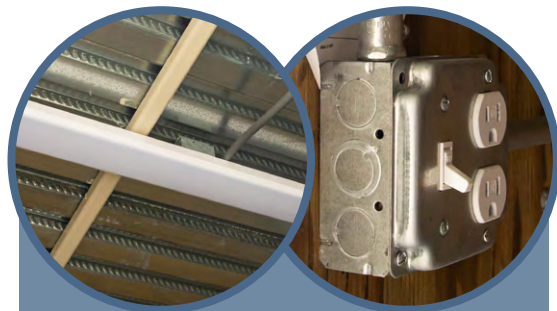
- 150Amp sub-feed load center for co-location area
- Interior LED light with switch
- Thermostat controlled exhaust fan
- Two double gang outlets and one single gang outlet
- Electrical outlets
- Rubber wall penetration for utilities



*150AMP SUB-FEED LOAD CENTER FOR
CO-LOCATION AREA*



THERMOSTAT CONTROLLED EXHAUST FAN



INTERIOR LED LIGHT WITH SWITCH



Interior LED light



FOUNDATION TYPE

Welded Steel Frame
with rebar enforced concrete floor



SPECIAL INTEGRATION

Electrical Systems
designed to customer specifications



CUSTOM FEATURES

Expanded Metal Security Door



Steel framework for CALCTRA's concrete communication building

CTE PRE-APPRENTICE PROGRAMS

CALCTRA's Career Technical Education (CTE) Programs offers pre-apprenticeship certifications, with instruction administered by journeyman under contract from local trade labor unions. These programs teach incarcerated individuals construction skills they can use to successfully obtain meaningful employment upon release. Incarcerated individuals receive technical training in the classroom as well as on the job training under the guidance of experienced professionals and graduate when they have passed rigorous examination.

Upon completion of the program, incarcerated individuals receive a pre-apprenticeship certification which can lead them to jobs with construction

companies that employ organized labor in various skill sets, including concrete pouring, framing, drywall, taping and texturing, painting, roofing and finished carpentry.

Under this program, CALCTRA produces modular buildings that are constructed to the highest structural standards approved by the California Department of Housing and Community Development (HDC) and the Division of the State Architect (DSA). Our modular buildings are fully inspected by the HCD.



Iron Worker

CALCTRA's Pre-Apprenticeship Iron Worker program is a 6 month training program under the supervision of journeyman professionals working with the International Association of Bridge, Structural, Ornamental and Reinforcing Iron Workers.



Carpentry

CALCTRA's Pre-Apprentice Carpentry is a 6 month training program under the supervision of journeyman professionals working with the Northern and Southern California Carpenter's Unions.



Construction Labor

CALCTRA's Pre-Apprentice Construction Labor program is a 6 month training program under the supervision of journeyman professionals working with the Northern and Southern California Construction and General Laborer's Unions.



**INTERESTED IN THIS PRODUCT?
CONTACT OUR SALES TEAM**

(916) 323-2419
salesinfo@calctra.ca.gov



Career Training | Quality Products | Changed Lives

CALIFORNIA CORRECTIONAL TRAINING & REHABILITATION AUTHORITY

560 E Natoma Street, Folsom, CA 95630 | calctra.ca.gov

FOLLOW CALCTRA ON SOCIAL MEDIA

